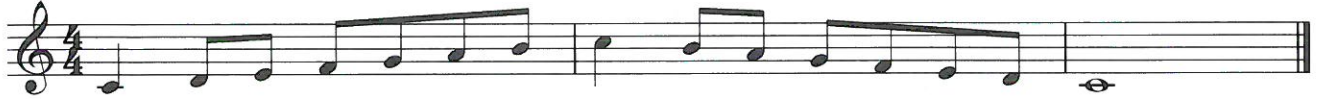


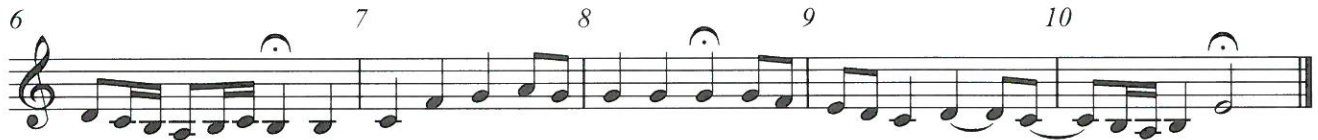
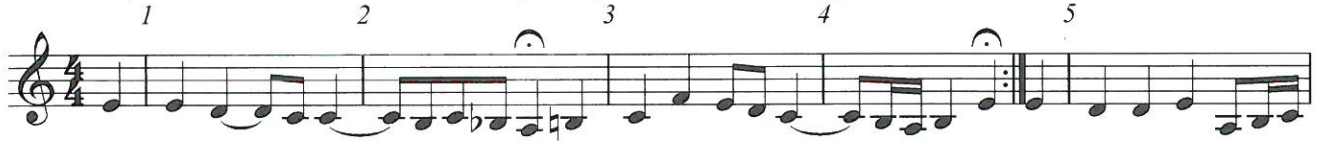
3rd Trumpet in B \flat

B Flat Major

1 Scale



"Es spricht de Unweisen Mund" #27 (The lips of the foolish say)

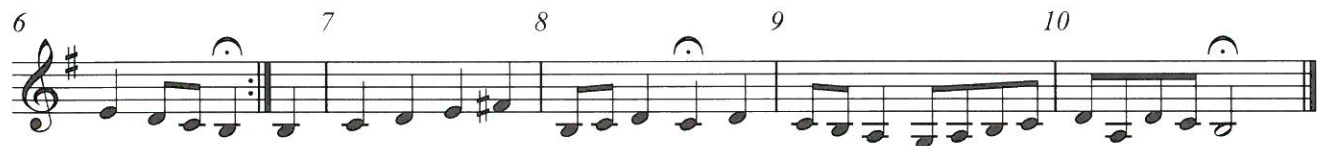


F Major

1 Scale



"O Ewigkeit, du Donnerwort" #26 (O Eternity, thou word of thunder)



C Major

1 2 3

The first system of the C Major section consists of three measures. Measure 1 starts with a treble clef, a key signature of one sharp (F#), and a 4/4 time signature. The melody begins with a quarter note on G4, followed by eighth notes on A4, B4, and C5. Measure 2 continues with eighth notes on B4, A4, G4, and F#4. Measure 3 concludes with a quarter note on E4 and a whole note on D4.

"Weg, mein Herz, mit den Gedanken" #298 (Away, my hear, with the thoughts)

1 2 3 4 5 6 7

8 9 10 11 12 13 14

15 16 17 18 19 20 21

22 23 24 25 26 27

The second section of the C Major section spans 27 measures across five systems. The first system contains measures 1-7, the second system measures 8-14, the third system measures 15-21, and the fourth system measures 22-27. The key signature remains one sharp (F#) and the time signature is 3/4. The melody is primarily composed of quarter and eighth notes, with some measures featuring a fermata over a half note.

G Major

1 2 3

The first system of the G Major section consists of three measures. Measure 1 starts with a treble clef, a key signature of two sharps (F# and C#), and a 4/4 time signature. The melody begins with a quarter note on G4, followed by eighth notes on A4, B4, and C5. Measure 2 continues with eighth notes on B4, A4, G4, and F#4. Measure 3 concludes with a quarter note on E4 and a whole note on D4.

"Aus meines Herzens Grunde" #1 (From the depths of my heart)

1 2 3 4 5

6 7 8 9 10 11

12 13 14 15 16

17 18 19 20 21

The second section of the G Major section spans 21 measures across four systems. The first system contains measures 1-5, the second system measures 6-11, the third system measures 12-16, and the fourth system measures 17-21. The key signature remains two sharps (F# and C#) and the time signature is 3/4. The melody is primarily composed of quarter and eighth notes, with some measures featuring a fermata over a half note.

3rd Trumpet in B \flat

D Major

1 2 3

The first staff of music for the D Major section, measures 1-3. It is written in treble clef with a key signature of two sharps (F# and C#) and a 4/4 time signature. The melody consists of quarter notes: D4, E4, F#4, G4, A4, B4, C5, B4, A4, G4, F#4, E4, D4.

"Ein' fest Burg is unser Gott" #20 (A mighty fortress is our God)

1 2 3

The second staff of music for the D Major section, measures 4-6. It is written in treble clef with a key signature of two sharps and a common time signature. The melody consists of quarter notes: D4, E4, F#4, G4, A4, B4, C5, B4, A4, G4, F#4, E4, D4.

4 5 6

The third staff of music for the D Major section, measures 7-9. It is written in treble clef with a key signature of two sharps. The melody consists of quarter notes: D4, E4, F#4, G4, A4, B4, C5, B4, A4, G4, F#4, E4, D4.

7 8 9

The fourth staff of music for the D Major section, measures 10-12. It is written in treble clef with a key signature of two sharps. The melody consists of quarter notes: D4, E4, F#4, G4, A4, B4, C5, B4, A4, G4, F#4, E4, D4.

10 11 12

The fifth staff of music for the D Major section, measures 13-15. It is written in treble clef with a key signature of two sharps. The melody consists of quarter notes: D4, E4, F#4, G4, A4, B4, C5, B4, A4, G4, F#4, E4, D4.

A Major

1 2 3

The first staff of music for the A Major section, measures 1-3. It is written in treble clef with a key signature of three sharps (F#, C#, G#) and a common time signature. The melody consists of quarter notes: A3, B3, C#4, D4, E4, F#4, G#4, F#4, E4, D4, C#4, B3, A3.

"Ich dank' dir, lieber Herre" #2 (I thank thee, dear Lord)

1 2 3 4 5

The second staff of music for the A Major section, measures 4-6. It is written in treble clef with a key signature of three sharps and a common time signature. The melody consists of quarter notes: A3, B3, C#4, D4, E4, F#4, G#4, F#4, E4, D4, C#4, B3, A3.

6 7 8 9

The third staff of music for the A Major section, measures 7-9. It is written in treble clef with a key signature of three sharps. The melody consists of quarter notes: A3, B3, C#4, D4, E4, F#4, G#4, F#4, E4, D4, C#4, B3, A3.

10 11 12 13

The fourth staff of music for the A Major section, measures 10-13. It is written in treble clef with a key signature of three sharps. The melody consists of quarter notes: A3, B3, C#4, D4, E4, F#4, G#4, F#4, E4, D4, C#4, B3, A3.

E Major

1 2 3

Musical notation for E Major, measures 1-3. The key signature has four sharps (F#, C#, G#, D#). The melody starts on E4, moves to F#4, G#4, A5, B5, then descends to A4, G#4, F#4, E4.

"Est is das Heil uns kommen her" #4 (Salvation has come to us)

1 2 3 4

Musical notation for "Est is das Heil uns kommen her" #4, measures 1-4. The key signature has four sharps. The melody starts on E4, moves to F#4, G#4, A4, B4, C#5, D5, E5, then descends to D5, C#5, B4, A4, G#4, F#4, E4.

5 6 7 8 9 10

Musical notation for "Est is das Heil uns kommen her" #4, measures 5-10. The melody continues from measure 4, ending on E4.

B Major

1 2 3

Musical notation for B Major, measures 1-3. The key signature has two sharps (F#, C#). The melody starts on B3, moves to C#4, D4, E4, F#4, G#4, then descends to F#4, E4, D4, B3.

"In allen meinen Taten" #140 (In all my deeds)

1 2 3 4 5 6

Musical notation for "In allen meinen Taten" #140, measures 1-6. The key signature has two sharps. The melody starts on B3, moves to C#4, D4, E4, F#4, G#4, then descends to F#4, E4, D4, C#4, B3.

7 8 9 10 11 12

Musical notation for "In allen meinen Taten" #140, measures 7-12. The melody continues from measure 6, ending on B3.

3rd Trumpet in B \flat F \sharp Major

1 2 3

"Was Gott tut, das ist wohlgetan" #65 (What God does is well done)

1 2 3 4 5

6 7 8 9 10

G \flat Major

1 2 3

"Freu' dich sehr, o meine Seele" #64 (Rejoice greatly, O my soul)

1 2 3 4 5

6 7 8 9

10 11 12 13

C# Major

1 2 3

The first staff of music for C# Major, measures 1-3. It begins with a treble clef, a key signature of two flats (B-flat and E-flat), and a common time signature. The melody consists of quarter notes: G4, A4, B4, C#5, D5, E5, F#5, G5, followed by a whole note G5.

"Gott der Vater wohn' uns bei" #135 (God the Father, dwell with us)

1 2 3 4 5 6

The second staff of music for C# Major, measures 1-6. It continues the melody from the first staff. Measures 1-2 are quarter notes: G4, A4, B4, C#5, D5, E5, F#5, G5. Measure 3 is a whole note G5. Measures 4-6 are eighth notes: G5, F#5, E5, D5, C#5, B4, A4, G4.

7 8 9 10 11

The third staff of music for C# Major, measures 7-11. Measures 7-8 are quarter notes: G4, A4, B4, C#5, D5, E5, F#5, G5. Measure 9 is a whole note G5. Measures 10-11 are eighth notes: G5, F#5, E5, D5, C#5, B4, A4, G4.

12 13 14 15 16

The fourth staff of music for C# Major, measures 12-16. Measures 12-13 are quarter notes: G4, A4, B4, C#5, D5, E5, F#5, G5. Measure 14 is a whole note G5. Measures 15-16 are eighth notes: G5, F#5, E5, D5, C#5, B4, A4, G4.

D \flat Major

1 2 3

The first staff of music for D-flat Major, measures 1-3. It begins with a treble clef, a key signature of three flats (B-flat, E-flat, and A-flat), and a common time signature. The melody consists of quarter notes: G4, A4, B4, C5, D5, E5, F5, G5, followed by a whole note G5.

"Wie schon leuchtet der Morgenstern" #86 (How brightly shines the morning star)

1 2 3 4 5

The second staff of music for D-flat Major, measures 1-5. It continues the melody from the first staff. Measures 1-2 are quarter notes: G4, A4, B4, C5, D5, E5, F5, G5. Measure 3 is a whole note G5. Measures 4-5 are eighth notes: G5, F5, E5, D5, C5, B4, A4, G4.

6 7 8 9 10

The third staff of music for D-flat Major, measures 6-10. Measure 6 is a quarter note G4. Measure 7 is a quarter note A4 with a fermata. Measure 8 is a quarter note B4 with a fermata. Measure 9 is a quarter note C5 with a fermata. Measure 10 is a quarter note D5.

11 12 13 14

The fourth staff of music for D-flat Major, measures 11-14. Measures 11-12 are quarter notes: G4, A4, B4, C5, D5, E5, F5, G5. Measure 13 is a whole note G5. Measure 14 is a quarter note A4 with a fermata.

A \flat Major

1 2 3

The first staff of music for the A-flat Major section contains three measures. Measure 1 starts with a treble clef, a key signature of two flats (B-flat and E-flat), and a common time signature. It begins with a quarter rest, followed by a quarter note G4, an eighth note A4, and an eighth note B-flat4. Measure 2 contains a quarter note C5, an eighth note B-flat4, and an eighth note A4. Measure 3 contains a quarter note G4, an eighth note F4, and an eighth note E-flat4, ending with a double bar line.

"Nun ruhen alle Walder," 117 (Now all the forests are at rest)

1 2 3 4 5

The second staff of music for the A-flat Major section contains two measures. Measure 4 starts with a treble clef, a key signature of two flats, and a common time signature. It begins with a quarter note G4, followed by eighth notes A4 and B-flat4. Measure 5 contains a quarter note C5, an eighth note B-flat4, and an eighth note A4.

6 7 8 9

The third staff of music for the A-flat Major section contains four measures. Measure 6 starts with a treble clef, a key signature of two flats, and a common time signature. It begins with a quarter note G4, followed by eighth notes A4 and B-flat4. Measure 7 contains a quarter note C5, an eighth note B-flat4, and an eighth note A4. Measure 8 contains a quarter note G4, an eighth note F4, and an eighth note E-flat4. Measure 9 contains a quarter note D4, an eighth note C4, and an eighth note B-flat3, ending with a double bar line.

10 11 12

The fourth staff of music for the A-flat Major section contains three measures. Measure 10 starts with a treble clef, a key signature of two flats, and a common time signature. It begins with a quarter note G4, followed by eighth notes A4 and B-flat4. Measure 11 contains a quarter note C5, an eighth note B-flat4, and an eighth note A4. Measure 12 contains a quarter note G4, an eighth note F4, and an eighth note E-flat4, ending with a double bar line.

E \flat Major

1 2 3

The first staff of music for the E-flat Major section contains three measures. Measure 1 starts with a treble clef, a key signature of three flats (B-flat, E-flat, and A-flat), and a common time signature. It begins with a quarter note G4, followed by eighth notes A4 and B-flat4. Measure 2 contains a quarter note C5, an eighth note B-flat4, and an eighth note A4. Measure 3 contains a quarter note G4, an eighth note F4, and an eighth note E-flat4, ending with a double bar line.

"Schmuke dich, o liebe Seele," 22 (Deck thyself, dear Soul)

1 2 3 4 5

The second staff of music for the E-flat Major section contains two measures. Measure 4 starts with a treble clef, a key signature of three flats, and a common time signature. It begins with a quarter note G4, followed by eighth notes A4 and B-flat4. Measure 5 contains a quarter note C5, an eighth note B-flat4, and an eighth note A4.

6 7 8 9 10

The third staff of music for the E-flat Major section contains five measures. Measure 6 starts with a treble clef, a key signature of three flats, and a common time signature. It begins with a quarter note G4, followed by eighth notes A4 and B-flat4. Measure 7 contains a quarter note C5, an eighth note B-flat4, and an eighth note A4. Measure 8 contains a quarter note G4, an eighth note F4, and an eighth note E-flat4. Measure 9 contains a quarter note D4, an eighth note C4, and an eighth note B-flat3. Measure 10 contains a quarter note G4, an eighth note F4, and an eighth note E-flat4, ending with a double bar line.

11 12 13 14 15

The fourth staff of music for the E-flat Major section contains five measures. Measure 11 starts with a treble clef, a key signature of three flats, and a common time signature. It begins with a quarter note G4, followed by eighth notes A4 and B-flat4. Measure 12 contains a quarter note C5, an eighth note B-flat4, and an eighth note A4. Measure 13 contains a quarter note G4, an eighth note F4, and an eighth note E-flat4. Measure 14 contains a quarter note D4, an eighth note C4, and an eighth note B-flat3. Measure 15 contains a quarter note G4, an eighth note F4, and an eighth note E-flat4, ending with a double bar line.