

1st Trumpet in B♭

B Flat Major

1 Scale 2 3

Musical notation for the B Flat Major scale, measures 1-3. The key signature has two flats (B♭ and E♭). The scale is written in 4/4 time. Measure 1 starts on B♭4 and ascends to G5. Measure 2 continues the ascent to E♭5. Measure 3 descends from E♭5 to B♭4.

"Es spricht de Unweisen Mund" #27 (The lips of the foolish say)

1 2 3 4 5

Musical notation for the first five measures of the piece. The key signature has two flats. Measure 1 starts on B♭4. Measure 2 has a slur over the notes. Measure 3 has a slur over the notes. Measure 4 has a slur over the notes. Measure 5 has a slur over the notes.

6 7 8 9 10

Musical notation for the next five measures. Measure 6 starts on B♭4. Measure 7 has a slur over the notes. Measure 8 has a slur over the notes. Measure 9 has a slur over the notes. Measure 10 has a slur over the notes.

F Major

1 Scale 2 3

Musical notation for the F Major scale, measures 1-3. The key signature has one flat (B♭). The scale is written in 4/4 time. Measure 1 starts on B♭4 and ascends to G5. Measure 2 continues the ascent to E5. Measure 3 descends from E5 to B♭4.

"O Ewigkeit, du Donnerwort" #26 (O Eternity, thou word of thunder)

1 2 3 4 5

Musical notation for the first five measures of the piece. The key signature has one flat. Measure 1 starts on B♭4. Measure 2 has a slur over the notes. Measure 3 has a slur over the notes. Measure 4 has a slur over the notes. Measure 5 has a slur over the notes.

6 7 8 9 10

Musical notation for the next five measures. Measure 6 starts on B♭4. Measure 7 has a slur over the notes. Measure 8 has a slur over the notes. Measure 9 has a slur over the notes. Measure 10 has a slur over the notes.

C Major

1 2 3

"Weg, mein Herz, mit den Gedanken" #298 (Away, my hear, with the thoughts)

1 2 3 4 5 6 7

8 9 10 11 12 13 14

15 16 17 18 19 20

21 22 23 24 25 26 27

Detailed description: This block contains the first system of music for the piece 'Weg, mein Herz, mit den Gedanken' in C Major. It consists of five staves of music. The first staff contains measures 1 through 3. The second staff contains measures 4 through 7. The third staff contains measures 8 through 14, with a repeat sign at measure 10. The fourth staff contains measures 15 through 20. The fifth staff contains measures 21 through 27. The key signature is one sharp (F#) and the time signature is 4/4.

G Major

1 2 3

"Aus meines Herzens Grunde" #1 (From the depths of my heart)

1 2 3 4 5

6 7 8 9 10 11

12 13 14 15 16

17 18 19 20 21

Detailed description: This block contains the second system of music for the piece 'Aus meines Herzens Grunde' in G Major. It consists of five staves of music. The first staff contains measures 1 through 3. The second staff contains measures 4 through 5. The third staff contains measures 6 through 11, with a repeat sign at measure 7. The fourth staff contains measures 12 through 16. The fifth staff contains measures 17 through 21. The key signature is two sharps (F# and C#) and the time signature is 4/4.

1st Trumpet in B♭

D Major

1 2 3

"Ein' fest Burg is unser Gott" #20 (A mighty fortress is our God)

1 2 3

4 5 6

7 8 9 10 11 12

A Major

1 2 3

"Ich dank' dir, lieber Herre" #2 (I thank thee, dear Lord)

1 2 3 4 5

6 7 8 9

10 11 12 13

E Major

1 2 3

Musical staff for E Major, measures 1-3. The staff is in treble clef with a key signature of three sharps (F#, C#, G#). The melody consists of eighth and quarter notes.

"Est is das Heil uns kommen her" #4 (Salvation has come to us)

1 2 3 4 5

Musical staff for E Major, measures 1-5. The staff is in treble clef with a key signature of three sharps. The melody includes quarter notes and half notes with accents.

6 7 8 9 10

Musical staff for E Major, measures 6-10. The staff is in treble clef with a key signature of three sharps. The melody includes quarter notes and half notes with accents.

B Major

1 2 3

Musical staff for B Major, measures 1-3. The staff is in treble clef with a key signature of two sharps (F#, C#). The melody consists of eighth and quarter notes.

"In allen meinen Taten" #140 (In all my deeds)

1 2 3 4 5 6

Musical staff for B Major, measures 1-6. The staff is in treble clef with a key signature of two sharps. The melody includes quarter notes and half notes with accents.

7 8 9 10 11 12

Musical staff for B Major, measures 7-12. The staff is in treble clef with a key signature of two sharps. The melody includes quarter notes and half notes with accents.

1st Trumpet in B \flat

F \sharp Major

1 2 3

Musical notation for the first staff of F \sharp Major, measures 1-3. The key signature has one sharp (F \sharp) and the time signature is common time (C). The melody consists of eighth notes: G \flat (measure 1), A \flat (measure 2), B \flat (measure 3).

"Was Gott tut, das ist wohlgetan" #65 (What God does is well done)

1 2 3 4 5

Musical notation for the second staff of F \sharp Major, measures 1-5. The key signature has one sharp (F \sharp) and the time signature is common time (C). The melody consists of quarter notes: G \flat (measure 1), A \flat (measure 2), B \flat (measure 3), C \flat (measure 4), D \flat (measure 5).

6 7 8 9 10

Musical notation for the third staff of F \sharp Major, measures 6-10. The key signature has one sharp (F \sharp) and the time signature is common time (C). The melody consists of quarter notes: E \flat (measure 6), F \flat (measure 7), G \flat (measure 8), A \flat (measure 9), B \flat (measure 10).

G \flat Major

1 2 3

Musical notation for the first staff of G \flat Major, measures 1-3. The key signature has two flats (B \flat , E \flat) and the time signature is common time (C). The melody consists of quarter notes: F \flat (measure 1), G \flat (measure 2), A \flat (measure 3).

"Freu' dich sehr, o meine Seele" #64 (Rejoice greatly, O my soul)

1 2 3 4 5 6

Musical notation for the second staff of G \flat Major, measures 1-6. The key signature has two flats (B \flat , E \flat) and the time signature is common time (C). The melody consists of quarter notes: F \flat (measure 1), G \flat (measure 2), A \flat (measure 3), B \flat (measure 4), C \flat (measure 5), D \flat (measure 6).

7 8 9

Musical notation for the third staff of G \flat Major, measures 7-9. The key signature has two flats (B \flat , E \flat) and the time signature is common time (C). The melody consists of quarter notes: E \flat (measure 7), F \flat (measure 8), G \flat (measure 9).

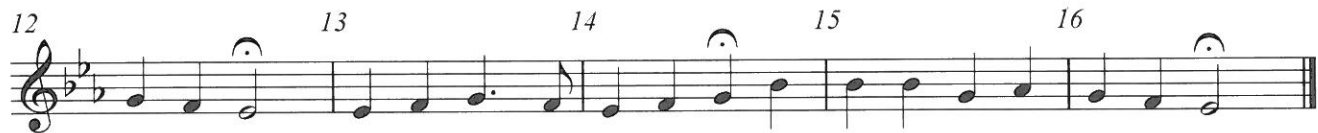
10 11 12 13

Musical notation for the fourth staff of G \flat Major, measures 10-13. The key signature has two flats (B \flat , E \flat) and the time signature is common time (C). The melody consists of quarter notes: A \flat (measure 10), B \flat (measure 11), C \flat (measure 12), D \flat (measure 13).

C# Major



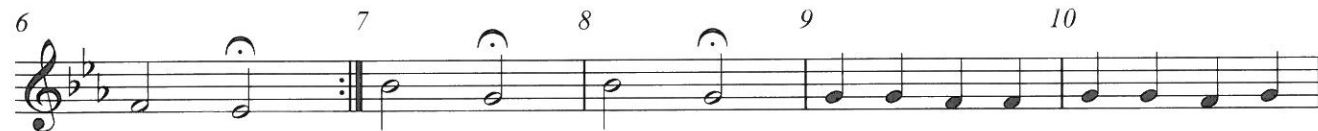
"Gott der Vater wohn' uns bei" #135 (God the Father, dwell with us)



D♭ Major

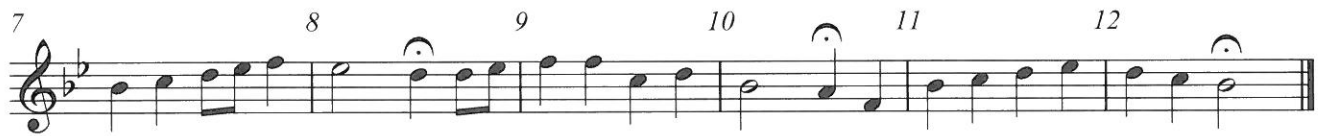


"Wie schon leuchtet der Morgenstern" #86 (How brightly shines the morning star)



A \flat Major

"Nun ruhen alle Walder," 117 (Now all the forests are at rest)

E \flat Major

"Schmuke dich, o liebe Seele," 22 (Deck thyself, dear Soul)

