

3rd Trombone

B Flat Major

1 Scale



"Es spricht de Unweisen Mund" #27 (The lips of the foolish say)



F Major

1 Scale



"O Ewigkeit, du Donnerwort" #26 (O Eternity, thou word of thunder)



C Major

1 2 3

"Weg, mein Herz, mit den Gedanken" #298 (Away, my hear, with the thoughts)

1 2 3 4 5 6 7

8 9 10 11 12 13 14

15 16 17 18 19 20

21 22 23 24 25 26 27

G Major

1 2 3

"Aus meines Herzens Grunde" #1 (From the depths of my heart)

1 2 3 4 5

6 7 8 9 10 11

12 13 14 15 16

17 18 19 20 21

3rd Trombone

D Major

1 2 3

Musical notation for the first staff of D Major, measures 1-3. The staff is in bass clef with a key signature of two sharps (F# and C#) and a 4/4 time signature. Measure 1 contains a half note G2, a quarter note A2, and a quarter note B2. Measure 2 contains a quarter note C3, a quarter note D3, a quarter note E3, and a quarter note F#3. Measure 3 contains a quarter note G3, a quarter note A3, a quarter note B3, and a half note C4.

"Ein' fest Burg is unser Gott" #20 (A mighty fortress is our God)

1 2 3

Musical notation for the second staff of D Major, measures 4-6. The staff is in bass clef with a key signature of two sharps and a common time signature. Measure 4 contains a half note G2, a quarter note A2, and a quarter note B2. Measure 5 contains a quarter note C3, a quarter note D3, a quarter note E3, and a quarter note F#3. Measure 6 contains a quarter note G3, a quarter note A3, a quarter note B3, and a half note C4.

4 5 6

Musical notation for the third staff of D Major, measures 7-9. The staff is in bass clef with a key signature of two sharps and a common time signature. Measure 7 contains a half note G2, a quarter note A2, and a quarter note B2. Measure 8 contains a quarter note C3, a quarter note D3, a quarter note E3, and a quarter note F#3. Measure 9 contains a quarter note G3, a quarter note A3, a quarter note B3, and a half note C4.

7 8 9 10 11 12

Musical notation for the fourth staff of D Major, measures 10-12. The staff is in bass clef with a key signature of two sharps and a common time signature. Measure 10 contains a half note G2, a quarter note A2, and a quarter note B2. Measure 11 contains a quarter note C3, a quarter note D3, a quarter note E3, and a quarter note F#3. Measure 12 contains a quarter note G3, a quarter note A3, a quarter note B3, and a half note C4.

A Major

1 2 3

Musical notation for the first staff of A Major, measures 1-3. The staff is in bass clef with a key signature of three sharps (F#, C#, G#) and a common time signature. Measure 1 contains a half note G2, a quarter note A2, and a quarter note B2. Measure 2 contains a quarter note C3, a quarter note D3, a quarter note E3, and a quarter note F#3. Measure 3 contains a quarter note G3, a quarter note A3, a quarter note B3, and a half note C4.

"Ich dank' dir, lieber Herre" #2 (I thank thee, dear Lord)

1 2 3 4 5

Musical notation for the second staff of A Major, measures 4-6. The staff is in bass clef with a key signature of three sharps and a common time signature. Measure 4 contains a half note G2, a quarter note A2, and a quarter note B2. Measure 5 contains a quarter note C3, a quarter note D3, a quarter note E3, and a quarter note F#3. Measure 6 contains a quarter note G3, a quarter note A3, a quarter note B3, and a half note C4.

6 7 8 9

Musical notation for the third staff of A Major, measures 7-9. The staff is in bass clef with a key signature of three sharps and a common time signature. Measure 7 contains a half note G2, a quarter note A2, and a quarter note B2. Measure 8 contains a quarter note C3, a quarter note D3, a quarter note E3, and a quarter note F#3. Measure 9 contains a quarter note G3, a quarter note A3, a quarter note B3, and a half note C4.

10 11 12 13

Musical notation for the fourth staff of A Major, measures 10-13. The staff is in bass clef with a key signature of three sharps and a common time signature. Measure 10 contains a half note G2, a quarter note A2, and a quarter note B2. Measure 11 contains a quarter note C3, a quarter note D3, a quarter note E3, and a quarter note F#3. Measure 12 contains a quarter note G3, a quarter note A3, a quarter note B3, and a half note C4. Measure 13 contains a half note G2, a quarter note A2, and a quarter note B2.

E Major

1 2 3

A musical staff in E major (three sharps) and common time. It contains three measures of music. Measure 1 starts with a bass clef and a key signature of three sharps. The notes are G2, A2, B2, C3, D3, E3. Measure 2 continues with F3, G3, A3, B3, C4, D4. Measure 3 ends with an E4 whole note.

"Est is das Heil uns kommen her" #4 (Salvation has come to us)

1 2 3 4 5

A musical staff in E major and common time. It contains two measures of music. Measure 4 starts with a bass clef and a key signature of three sharps. The notes are G2, A2, B2, C3, D3, E3. Measure 5 continues with F3, G3, A3, B3, C4, D4, E4.

6 7 8 9 10

A musical staff in E major and common time. It contains five measures of music. Measure 6 starts with a bass clef and a key signature of three sharps. The notes are G2, A2, B2, C3, D3, E3. Measure 7 continues with F3, G3, A3, B3, C4, D4. Measure 8 continues with E4, D4, C4, B3, A3, G3. Measure 9 continues with F3, E3, D3, C3, B2, A2. Measure 10 ends with a G2 whole note.

B Major

1 2 3

A musical staff in B major (two sharps) and common time. It contains three measures of music. Measure 1 starts with a bass clef and a key signature of two sharps. The notes are G2, A2, B2, C3, D3, E3. Measure 2 continues with F3, G3, A3, B3, C4, D4. Measure 3 ends with an E4 whole note.

"In allen meinen Taten" #140 (In all my deeds)

1 2 3 4 5

A musical staff in B major and common time. It contains two measures of music. Measure 4 starts with a bass clef and a key signature of two sharps. The notes are G2, A2, B2, C3, D3, E3. Measure 5 continues with F3, G3, A3, B3, C4, D4, E4.

6 7 8

A musical staff in B major and common time. It contains three measures of music. Measure 6 starts with a bass clef and a key signature of two sharps. The notes are G2, A2, B2, C3, D3, E3. Measure 7 continues with F3, G3, A3, B3, C4, D4. Measure 8 continues with E4, D4, C4, B3, A3, G3.

9 10 11 12

A musical staff in B major and common time. It contains four measures of music. Measure 9 starts with a bass clef and a key signature of two sharps. The notes are G2, A2, B2, C3, D3, E3. Measure 10 continues with F3, G3, A3, B3, C4, D4. Measure 11 continues with E4, D4, C4, B3, A3, G3. Measure 12 ends with a G2 whole note.

3rd Trombone

F# Major



"Was Gott tut, das ist wohlgetan" #65 (What God does is well done)



Gb Major



"Freu' dich sehr, o meine Seele" #64 (Rejoice greatly, O my soul)



C# Major

1 2 3

First staff of music for C# Major, measures 1-3. The key signature has four sharps (F#, C#, G#, D#) and the time signature is common time (C). The melody consists of eighth and quarter notes.

"Gott der Vater wohn' uns bei" #135 (God the Father, dwell with us)

1 2 3 4 5 6

Second staff of music for C# Major, measures 4-6. The melody continues with eighth and quarter notes.

7 8 9 10 11

Third staff of music for C# Major, measures 7-11. Measure 10 contains a double bar line with a repeat sign.

12 13 14 15 16

Fourth staff of music for C# Major, measures 12-16. The melody concludes with a final note.

Db Major

1 2 3

First staff of music for Db Major, measures 1-3. The key signature has five flats (F, Cb, Gb, Db, Ab) and the time signature is common time (C). The melody consists of eighth and quarter notes.

"Wie schon leuchtet der Morgenstern" #86 (How brightly shines the morning star)

1 2 3 4 5

Second staff of music for Db Major, measures 4-5. The melody continues with eighth and quarter notes.

6 7 8 9 10

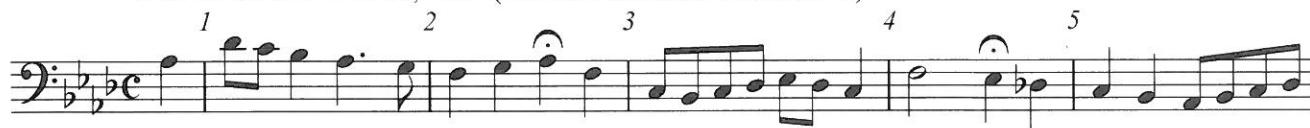
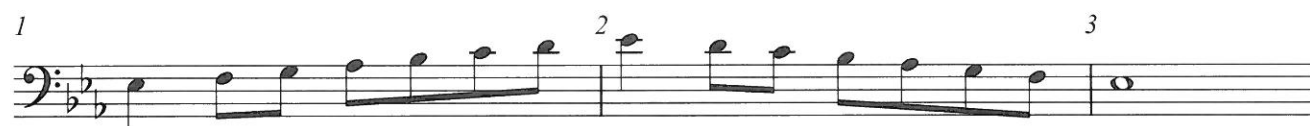
Third staff of music for Db Major, measures 6-10. Measure 7 contains a double bar line with a repeat sign. Measures 8 and 9 feature half notes with fermatas.

11 12 13 14

Fourth staff of music for Db Major, measures 11-14. Measures 12 and 14 feature half notes with fermatas.

A \flat Major

"Nun ruhen alle Walder," 117 (Now all the forests are at rest)

E \flat Major

"Schmuke dich, o liebe Seele," 22 (Deck thyself, dear Soul)

