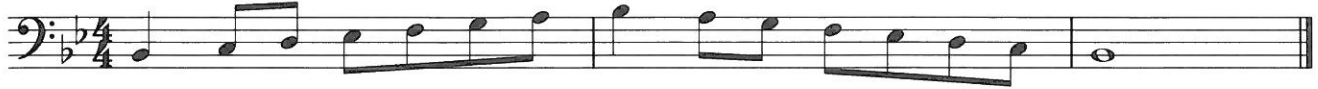


2nd Trombone

# B Flat Major

1 Scale



"Es spricht de Unweisen Mund" #27 (The lips of the foolish say)



# F Major

1 Scale



"O Ewigkeit, du Donnerwort" #26 (O Eternity, thou word of thunder)



## C Major

1 2 3

"Weg, mein Herz, mit den Gedanken" #298 (Away, my hear, with the thoughts)

1 2 3 4 5 6 7

8 9 10 11 12 13 14

15 16 17 18 19 20 21

22 23 24 25 26 27

Detailed description: This block contains the musical score for the 2nd Trombone part in C Major, measures 1 through 27. The score is written in bass clef. The first system (measures 1-3) is in 4/4 time. The second system (measures 4-7) is in 3/4 time. The third system (measures 8-14) is in 3/4 time and includes a repeat sign at measure 10. The fourth system (measures 15-21) is in 3/4 time. The fifth system (measures 22-27) is in 3/4 time. The piece concludes with a double bar line at measure 27.

## G Major

1 2 3

"Aus meines Herzens Grunde" #1 (From the depths of my heart)

1 2 3 4 5

6 7 8 9 10 11

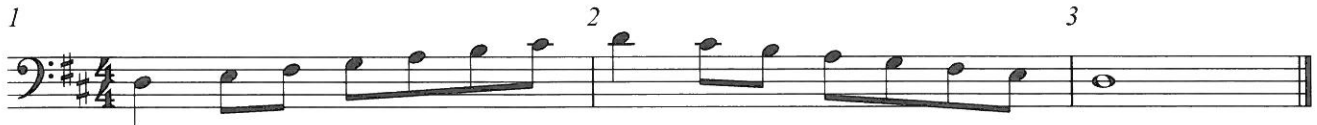
12 13 14 15 16

17 18 19 20 21

Detailed description: This block contains the musical score for the 2nd Trombone part in G Major, measures 1 through 21. The score is written in bass clef. The first system (measures 1-3) is in 4/4 time. The second system (measures 4-5) is in 3/4 time. The third system (measures 6-11) is in 3/4 time and includes a repeat sign at measure 7. The fourth system (measures 12-16) is in 3/4 time. The fifth system (measures 17-21) is in 3/4 time. The piece concludes with a double bar line at measure 21.

## 2nd Trombone

## D Major



"Ein' fest Burg is unser Gott" #20 (A mighty fortress is our God)



## A Major



"Ich dank' dir, lieber Herre" #2 (I thank thee, dear Lord)



# E Major

1 2 3

Musical staff for E Major, measures 1-3. The staff is in bass clef with a key signature of three sharps (F#, C#, G#). Measure 1 starts with a quarter rest, followed by quarter notes G2, A2, B2, C3. Measure 2 starts with a quarter rest, followed by quarter notes D3, C3, B2, A2. Measure 3 contains a whole note G2.

"Est is das Heil uns kommen her" #4 (Salvation has come to us)

1 2 3 4

Musical staff for E Major, measures 4-10. The staff is in bass clef with a key signature of three sharps and a common time signature (C). Measure 4 starts with a quarter rest, followed by quarter notes G2, A2, B2, C3. Measure 5 starts with a quarter rest, followed by quarter notes D3, C3, B2, A2. Measure 6 starts with a quarter rest, followed by quarter notes G2, A2, B2, C3. Measure 7 starts with a quarter rest, followed by quarter notes D3, C3, B2, A2. Measure 8 starts with a quarter rest, followed by quarter notes G2, A2, B2, C3. Measure 9 starts with a quarter rest, followed by quarter notes D3, C3, B2, A2. Measure 10 contains a whole note G2.

5 6 7 8 9 10

Musical staff for E Major, measures 5-10. The staff is in bass clef with a key signature of three sharps. Measure 5 starts with a quarter rest, followed by quarter notes G2, A2, B2, C3. Measure 6 starts with a quarter rest, followed by quarter notes D3, C3, B2, A2. Measure 7 starts with a quarter rest, followed by quarter notes G2, A2, B2, C3. Measure 8 starts with a quarter rest, followed by quarter notes D3, C3, B2, A2. Measure 9 starts with a quarter rest, followed by quarter notes G2, A2, B2, C3. Measure 10 contains a whole note G2.

# B Major

1 2 3

Musical staff for B Major, measures 1-3. The staff is in bass clef with a key signature of two sharps (F#, C#). Measure 1 starts with a quarter rest, followed by quarter notes G2, A2, B2, C3. Measure 2 starts with a quarter rest, followed by quarter notes D3, C3, B2, A2. Measure 3 contains a whole note G2.

"In allen meinen Taten" #140 (In all my deeds)

1 2 3 4 5 6

Musical staff for B Major, measures 1-6. The staff is in bass clef with a key signature of two sharps and a common time signature (C). Measure 1 starts with a quarter rest, followed by quarter notes G2, A2, B2, C3. Measure 2 starts with a quarter rest, followed by quarter notes D3, C3, B2, A2. Measure 3 starts with a quarter rest, followed by quarter notes G2, A2, B2, C3. Measure 4 starts with a quarter rest, followed by quarter notes D3, C3, B2, A2. Measure 5 starts with a quarter rest, followed by quarter notes G2, A2, B2, C3. Measure 6 starts with a quarter rest, followed by quarter notes D3, C3, B2, A2.

7 8 9 10 11 12

Musical staff for B Major, measures 7-12. The staff is in bass clef with a key signature of two sharps. Measure 7 starts with a quarter rest, followed by quarter notes G2, A2, B2, C3. Measure 8 starts with a quarter rest, followed by quarter notes D3, C3, B2, A2. Measure 9 starts with a quarter rest, followed by quarter notes G2, A2, B2, C3. Measure 10 starts with a quarter rest, followed by quarter notes D3, C3, B2, A2. Measure 11 starts with a quarter rest, followed by quarter notes G2, A2, B2, C3. Measure 12 contains a whole note G2.

2nd Trombone

# F# Major

1 2 3

Musical notation for F# Major, measures 1-3. The key signature has four sharps (F#, C#, G#, D#) and the time signature is common time (C). The notes are: 1. D2, E2, F#2, G2, A2, B2; 2. A2, G2, F#2, E2, D2; 3. D2.

"Was Gott tut, das ist wohlgetan" #65 (What God does is well done)

1 2 3 4 5

Musical notation for F# Major, measures 4-5. The key signature has four sharps and the time signature is common time. The notes are: 4. D2, E2, F#2, G2, A2, B2; 5. A2, G2, F#2, E2, D2.

6 7 8 9 10

Musical notation for F# Major, measures 6-10. The key signature has four sharps and the time signature is common time. The notes are: 6. D2, E2, F#2, G2, A2, B2; 7. A2, G2, F#2, E2, D2; 8. D2, E2, F#2, G2, A2, B2; 9. A2, G2, F#2, E2, D2; 10. D2.

# Gb Major

1 2 3

Musical notation for Gb Major, measures 1-3. The key signature has five flats (F, Cb, Gb, Db, Ab) and the time signature is common time. The notes are: 1. D1, E1, F1, Gb1, Ab1, Bb1; 2. Ab1, Gb1, F1, E1, D1; 3. D1.

"Freu' dich sehr, o meine Seele" #64 (Rejoice greatly, O my soul)

1 2 3 4 5

Musical notation for Gb Major, measures 4-5. The key signature has five flats and the time signature is common time. The notes are: 4. D1, E1, F1, Gb1, Ab1, Bb1; 5. Ab1, Gb1, F1, E1, D1.

6 7 8 9

Musical notation for Gb Major, measures 6-9. The key signature has five flats and the time signature is common time. The notes are: 6. D1, E1, F1, Gb1, Ab1, Bb1; 7. Ab1, Gb1, F1, E1, D1; 8. D1, E1, F1, Gb1, Ab1, Bb1; 9. Ab1, Gb1, F1, E1, D1.

10 11 12 13

Musical notation for Gb Major, measures 10-13. The key signature has five flats and the time signature is common time. The notes are: 10. D1, E1, F1, Gb1, Ab1, Bb1; 11. Ab1, Gb1, F1, E1, D1; 12. D1, E1, F1, Gb1, Ab1, Bb1; 13. Ab1, Gb1, F1, E1, D1.

# C# Major

1 2 3

"Gott der Vater wohn' uns bei" #135 (God the Father, dwell with us)

1 2 3 4 5 6

7 8 9 10 11

12 13 14 15 16

# D♭ Major

1 2 3

"Wie schon leuchtet der Morgenstern" #86 (How brightly shines the morning star)

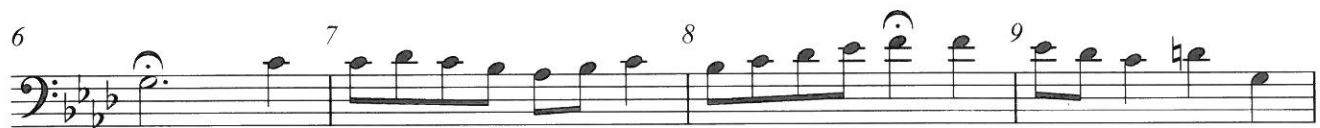
1 2 3 4 5

6 7 8 9 10

11 12 13 14

A $\flat$  Major

"Nun ruhen alle Walder," 117 (Now all the forests are at rest)

E $\flat$  Major

"Schmuke dich, o liebe Seele," 22 (Deck thyself, dear Soul)

