

Tenor Saxophone

# B Flat Major

1 Scale 2 3

Musical notation for the B Flat Major scale, measures 1-3. The key signature has two flats (Bb and Eb), and the time signature is 4/4. The scale is written in a single line of music, starting on a middle C (Bb4) and ascending to a G5. Measure 1 contains the first four notes (Bb, C, D, Eb), measure 2 contains the next four notes (E, F, G, Ab), and measure 3 contains the final three notes (Bb, C, D) followed by a whole rest.

"Es spricht de Unweisen Mund" #27 (The lips of the foolish say)

Musical notation for the first five measures of the piece "Es spricht de Unweisen Mund". The key signature has two flats and the time signature is 4/4. Measure 1 starts with a whole rest, followed by quarter notes Bb, C, D, Eb. Measure 2 has quarter notes E, F, G, Ab. Measure 3 has quarter notes Bb, C, D, Eb. Measure 4 has quarter notes E, F, G, Ab. Measure 5 has quarter notes Bb, C, D, Eb, ending with a double bar line.

6 7 8 9 10

Musical notation for measures 6-10 of the piece "Es spricht de Unweisen Mund". Measure 6 has quarter notes Bb, C, D, Eb. Measure 7 has quarter notes E, F, G, Ab. Measure 8 has quarter notes Bb, C, D, Eb. Measure 9 has quarter notes E, F, G, Ab. Measure 10 has quarter notes Bb, C, D, Eb, ending with a double bar line.

# F Major

1 Scale 2 3

Musical notation for the F Major scale, measures 1-3. The key signature has one flat (Bb), and the time signature is 4/4. The scale is written in a single line of music, starting on a middle C (C4) and ascending to a G5. Measure 1 contains the first four notes (C, D, E, F), measure 2 contains the next four notes (G, Ab, Bb, C), and measure 3 contains the final three notes (D, E, F) followed by a whole rest.

"O Ewigkeit, du Donnerwort" #26 (O Eternity, thou word of thunder)

Musical notation for the first five measures of the piece "O Ewigkeit, du Donnerwort". The key signature has one flat and the time signature is 4/4. Measure 1 starts with a whole rest, followed by quarter notes C, D, E, F. Measure 2 has quarter notes G, Ab, Bb, C. Measure 3 has quarter notes D, E, F, G. Measure 4 has quarter notes Ab, Bb, C, D. Measure 5 has quarter notes E, F, G, Ab, ending with a double bar line.

6 7 8 9 10

Musical notation for measures 6-10 of the piece "O Ewigkeit, du Donnerwort". Measure 6 has quarter notes Bb, C, D, Eb. Measure 7 has quarter notes F, G, Ab, Bb. Measure 8 has quarter notes C, D, E, F. Measure 9 has quarter notes G, Ab, Bb, C. Measure 10 has quarter notes D, E, F, G, ending with a double bar line.

# C Major

1 2 3

"Weg, mein Herz, mit den Gedanken" #298 (Away, my hear, with the thoughts)

1 2 3 4 5 6 7

8 9 10 11 12 13 14

15 16 17 18 19 20 21

22 23 24 25 26 27

# G Major

1 2 3

"Aus meines Herzens Grunde" #1 (From the depths of my heart)

1 2 3 4 5

6 7 8 9 10 11

12 13 14 15 16

17 18 19 20 21

Tenor Saxophone

# D Major

1 2 3

First staff of music for D Major, measures 1-3. The key signature has four sharps (F#, C#, G#, D#) and the time signature is 4/4. The melody consists of eighth and quarter notes.

"Ein' fest Burg is unser Gott" #20 (A mighty fortress is our God)

1 2 3

Second staff of music for D Major, measures 4-6. The key signature has four sharps and the time signature is common time (C). The melody continues with quarter and eighth notes.

4 5 6

Third staff of music for D Major, measures 7-9. The key signature has four sharps and the time signature is common time. The melody includes a repeat sign in measure 8.

7 8 9

Fourth staff of music for D Major, measures 10-12. The key signature has four sharps and the time signature is common time. The melody continues with quarter and eighth notes.

10 11 12

Fifth staff of music for D Major, measures 13-15. The key signature has four sharps and the time signature is common time. The melody concludes with a double bar line.

# A Major

1 2 3

First staff of music for A Major, measures 1-3. The key signature has three sharps (F#, C#, G#) and the time signature is common time. The melody consists of quarter and eighth notes.

"Ich dank' dir, lieber Herre" #2 (I thank thee, dear Lord)

1 2 3 4 5

Second staff of music for A Major, measures 4-6. The key signature has three sharps and the time signature is common time. The melody includes a repeat sign in measure 5.

6 7 8 9

Third staff of music for A Major, measures 7-9. The key signature has three sharps and the time signature is common time. The melody continues with quarter and eighth notes.

10 11 12 13

Fourth staff of music for A Major, measures 10-13. The key signature has three sharps and the time signature is common time. The melody concludes with a double bar line.

# E Major

1 2 3

Musical notation for E Major, measures 1-3. The key signature has four sharps (F#, C#, G#, D#). The melody consists of eighth and quarter notes.

"Est is das Heil uns kommen her" #4 (Salvation has come to us)

1 2 3 4

Musical notation for E Major, measures 1-4. The key signature has four sharps. The melody consists of eighth and quarter notes.

5 6 7 8 9 10

Musical notation for E Major, measures 5-10. The key signature has four sharps. The melody consists of eighth and quarter notes.

# B Major

1 2 3

Musical notation for B Major, measures 1-3. The key signature has two sharps (F#, C#). The melody consists of eighth and quarter notes.

"In allen meinen Taten" #140 (In all my deeds)

1 2 3 4 5 6

Musical notation for B Major, measures 1-6. The key signature has two sharps. The melody consists of quarter and eighth notes.

7 8 9 10 11 12

Musical notation for B Major, measures 7-12. The key signature has two sharps. The melody consists of quarter and eighth notes.

Tenor Saxophone

# F# Major

1 2 3

Musical notation for F# Major, measures 1-3. The key signature has two sharps (F# and C#) and the time signature is common time (C). The melody consists of eighth and quarter notes.

"Was Gott tut, das ist wohlgetan" #65 (What God does is well done)

1 2 3 4 5

Musical notation for "Was Gott tut, das ist wohlgetan", measures 1-5. The key signature has two sharps (F# and C#) and the time signature is common time (C). The melody includes quarter, eighth, and half notes with some slurs.

6 7 8 9 10

Musical notation for "Was Gott tut, das ist wohlgetan", measures 6-10. The key signature has two sharps (F# and C#) and the time signature is common time (C). The melody continues with quarter and eighth notes.

# Gb Major

1 2 3

Musical notation for Gb Major, measures 1-3. The key signature has two flats (Bb and Eb) and the time signature is common time (C). The melody consists of eighth and quarter notes.

"Freu' dich sehr, o meine Seele" #64 (Rejoice greatly, O my soul)

1 2 3 4 5

Musical notation for "Freu' dich sehr, o meine Seele", measures 1-5. The key signature has two flats (Bb and Eb) and the time signature is common time (C). The melody includes quarter, eighth, and half notes with slurs.

6 7 8 9

Musical notation for "Freu' dich sehr, o meine Seele", measures 6-9. The key signature has two flats (Bb and Eb) and the time signature is common time (C). The melody continues with quarter and eighth notes.

10 11 12 13

Musical notation for "Freu' dich sehr, o meine Seele", measures 10-13. The key signature has two flats (Bb and Eb) and the time signature is common time (C). The melody continues with quarter and eighth notes.

# C# Major

1 2 3

Musical staff for C# Major, measures 1-3. The staff is in treble clef with a key signature of two flats (Bb, Eb) and a common time signature (C). The melody consists of quarter notes: G4, A4, Bb4, C5, D5, E5, F5, G5, F5, E5, D5, C5, Bb4, A4, G4.

"Gott der Vater wohn' uns bei" #135 (God the Father, dwell with us)

1 2 3 4 5 6

Musical staff for C# Major, measures 4-6. The staff is in treble clef with a key signature of two flats (Bb, Eb) and a common time signature (C). The melody consists of quarter notes: G4, A4, Bb4, C5, D5, E5, F5, G5, F5, E5, D5, C5, Bb4, A4, G4.

7 8 9 10 11

Musical staff for C# Major, measures 7-11. The staff is in treble clef with a key signature of two flats (Bb, Eb) and a common time signature (C). The melody consists of quarter notes: G4, A4, Bb4, C5, D5, E5, F5, G5, F5, E5, D5, C5, Bb4, A4, G4.

12 13 14 15 16

Musical staff for C# Major, measures 12-16. The staff is in treble clef with a key signature of two flats (Bb, Eb) and a common time signature (C). The melody consists of quarter notes: G4, A4, Bb4, C5, D5, E5, F5, G5, F5, E5, D5, C5, Bb4, A4, G4.

# Db Major

1 2 3

Musical staff for Db Major, measures 1-3. The staff is in treble clef with a key signature of three flats (Bb, Eb, Ab) and a common time signature (C). The melody consists of quarter notes: G4, A4, Bb4, C5, D5, E5, F5, G5, F5, E5, D5, C5, Bb4, A4, G4.

"Wie schon leuchtet der Morgenstern" #86 (How brightly shines the morning star)

1 2 3 4 5

Musical staff for Db Major, measures 4-5. The staff is in treble clef with a key signature of three flats (Bb, Eb, Ab) and a common time signature (C). The melody consists of quarter notes: G4, A4, Bb4, C5, D5, E5, F5, G5, F5, E5, D5, C5, Bb4, A4, G4.

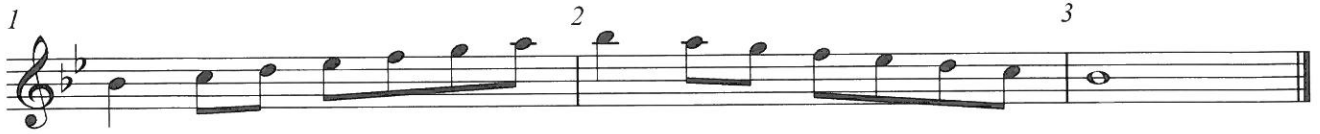
6 7 8 9 10

Musical staff for Db Major, measures 6-10. The staff is in treble clef with a key signature of three flats (Bb, Eb, Ab) and a common time signature (C). The melody consists of quarter notes: G4, A4, Bb4, C5, D5, E5, F5, G5, F5, E5, D5, C5, Bb4, A4, G4.

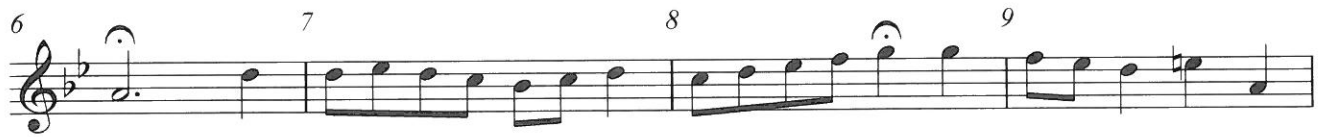
11 12 13 14

Musical staff for Db Major, measures 11-14. The staff is in treble clef with a key signature of three flats (Bb, Eb, Ab) and a common time signature (C). The melody consists of quarter notes: G4, A4, Bb4, C5, D5, E5, F5, G5, F5, E5, D5, C5, Bb4, A4, G4.

Tenor Saxophone  
**A $\flat$  Major**



"Nun ruhen alle Walder," 117 (Now all the forests are at rest)



**E $\flat$  Major**



"Schmuke dich, o liebe Seele," 22 (Deck thyself, dear Soul)

