

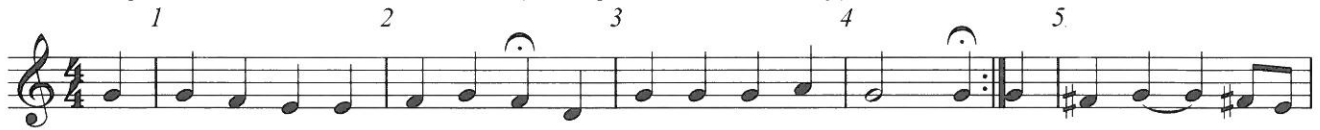
2nd Clarinet in B \flat

B Flat Major

1 Scale



"Es spricht de Unweisen Mund" #27 (The lips of the foolish say)

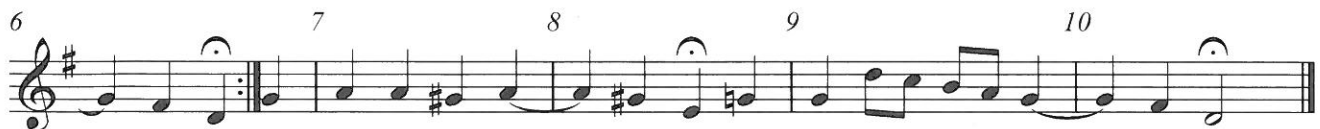


F Major

1 Scale



"O Ewigkeit, du Donnerwort" #26 (O Eternity, thou word of thunder)



C Major

1 2 3

"Weg, mein Herz, mit den Gedanken" #298 (Away, my hear, with the thoughts)

1 2 3 4 5 6 7 8 9

10 11 12 13 14 15 16 17

18 19 20 21 22 23 24 25 26 27

G Major

1 2 3

"Aus meines Herzens Grunde" #1 (From the depths of my heart)

1 2 3 4 5 6 7

8 9 10 11 12 13 14

15 16 17 18 19 20 21

D Major

1 2 3

"Ein' fest Burg is unser Gott" #20 (A mighty fortress is our God)

1 2 3

4 5 6

7 8 9

10 11 12

A Major

1 2 3

"Ich dank' dir, lieber Herre" #2 (I thank thee, dear Lord)

1 2 3 4 5

6 7 8 9

10 11 12 13

E Major

1 2 3

A musical staff in E major (three sharps) and common time. It contains three measures of music. Measure 1 starts with a treble clef and a key signature of three sharps. The notes are G4, A4, B4, C5. Measure 2 contains D5, E5, D5, C5. Measure 3 contains B4, A4, G4, F4, ending with a double bar line.

"Est is das Heil uns kommen her" #4 (Salvation has come to us)

1 2 3 4 5

A musical staff in E major and common time. It contains five measures of music. Measure 4 starts with a treble clef and a key signature of three sharps. The notes are G4, A4, B4, C5. Measure 5 contains D5, E5, D5, C5. Measure 6 contains B4, A4, G4, F4. Measure 7 contains E4, D4, C4, B3. Measure 8 contains A3, G3, F3, E3, ending with a double bar line.

6 7 8 9 10

A musical staff in E major and common time. It contains five measures of music. Measure 9 starts with a treble clef and a key signature of three sharps. The notes are G4, A4, B4, C5. Measure 10 contains D5, E5, D5, C5. Measure 11 contains B4, A4, G4, F4. Measure 12 contains E4, D4, C4, B3. Measure 13 contains A3, G3, F3, E3, ending with a double bar line.

B Major

1 2 3

A musical staff in B major (two sharps) and common time. It contains three measures of music. Measure 1 starts with a treble clef and a key signature of two sharps. The notes are G4, A4, B4, C5. Measure 2 contains D5, E5, D5, C5. Measure 3 contains B4, A4, G4, F4, ending with a double bar line.

"In allen meinen Taten" #140 (In all my deeds)

1 2 3 4 5 6

A musical staff in B major and common time. It contains six measures of music. Measure 4 starts with a treble clef and a key signature of two sharps. The notes are G4, A4, B4, C5. Measure 5 contains D5, E5, D5, C5. Measure 6 contains B4, A4, G4, F4. Measure 7 contains E4, D4, C4, B3. Measure 8 contains A3, G3, F3, E3. Measure 9 contains D3, C3, B2, A2. Measure 10 contains G2, F2, E2, D2, ending with a double bar line.

7 8 9 10 11 12

A musical staff in B major and common time. It contains six measures of music. Measure 11 starts with a treble clef and a key signature of two sharps. The notes are G4, A4, B4, C5. Measure 12 contains D5, E5, D5, C5. Measure 13 contains B4, A4, G4, F4. Measure 14 contains E4, D4, C4, B3. Measure 15 contains A3, G3, F3, E3. Measure 16 contains D3, C3, B2, A2. Measure 17 contains G2, F2, E2, D2, ending with a double bar line.

2nd Clarinet in B \flat

F \sharp Major

1 2 3

A musical staff in treble clef with a key signature of three flats (B \flat , E \flat , A \flat) and a common time signature. It contains three measures of music. Measure 1 starts with a quarter rest followed by quarter notes G \flat , A \flat , B \flat , C \flat . Measure 2 contains quarter notes D \flat , E \flat , F \sharp , G \flat . Measure 3 contains quarter notes A \flat , B \flat , C \flat , D \flat , ending with a whole note E \flat .

"Was Gott tut, das ist wohlgetan" #65 (What God does is well done)

1 2 3 4 5

A musical staff in treble clef with a key signature of three flats and common time. It contains two measures of music. Measure 4 starts with a quarter rest followed by quarter notes G \flat , A \flat , B \flat , C \flat . Measure 5 contains quarter notes D \flat , E \flat , F \sharp , G \flat , ending with a whole note A \flat .

6 7 8 9 10

A musical staff in treble clef with a key signature of three flats and common time. It contains five measures of music. Measure 6 starts with a quarter rest followed by quarter notes G \flat , A \flat , B \flat , C \flat . Measure 7 contains quarter notes D \flat , E \flat , F \sharp , G \flat . Measure 8 contains quarter notes A \flat , B \flat , C \flat , D \flat . Measure 9 contains quarter notes E \flat , F \sharp , G \flat , A \flat . Measure 10 contains quarter notes B \flat , C \flat , D \flat , E \flat , ending with a whole note F \sharp .

G \flat Major

1 2 3

A musical staff in treble clef with a key signature of four flats (B \flat , E \flat , A \flat , D \flat) and a common time signature. It contains three measures of music. Measure 1 starts with a quarter rest followed by quarter notes G \flat , A \flat , B \flat , C \flat . Measure 2 contains quarter notes D \flat , E \flat , F \sharp , G \flat . Measure 3 contains quarter notes A \flat , B \flat , C \flat , D \flat , ending with a whole note E \flat .

"Freu' dich sehr, o meine Seele" #64 (Rejoice greatly, O my soul)

1 2 3 4 5

A musical staff in treble clef with a key signature of four flats and common time. It contains two measures of music. Measure 4 starts with a quarter rest followed by quarter notes G \flat , A \flat , B \flat , C \flat . Measure 5 contains quarter notes D \flat , E \flat , F \sharp , G \flat , ending with a whole note A \flat .

6 7 8 9

A musical staff in treble clef with a key signature of four flats and common time. It contains four measures of music. Measure 6 starts with a quarter rest followed by quarter notes G \flat , A \flat , B \flat , C \flat . Measure 7 contains quarter notes D \flat , E \flat , F \sharp , G \flat . Measure 8 contains quarter notes A \flat , B \flat , C \flat , D \flat . Measure 9 contains quarter notes E \flat , F \sharp , G \flat , A \flat , ending with a whole note B \flat .

10 11 12 13

A musical staff in treble clef with a key signature of four flats and common time. It contains four measures of music. Measure 10 starts with a quarter rest followed by quarter notes G \flat , A \flat , B \flat , C \flat . Measure 11 contains quarter notes D \flat , E \flat , F \sharp , G \flat . Measure 12 contains quarter notes A \flat , B \flat , C \flat , D \flat . Measure 13 contains quarter notes E \flat , F \sharp , G \flat , A \flat , ending with a whole note B \flat .

C# Major

1 2 3

Musical staff 1 for C# Major, measures 1-3. The staff is in treble clef with a key signature of two flats (B-flat and E-flat) and a common time signature. The melody consists of quarter notes and eighth notes.

"Gott der Vater wohn' uns bei" #135 (God the Father, dwell with us)

1 2 3 4 5

Musical staff 2 for C# Major, measures 1-5. The staff is in treble clef with a key signature of two flats and a common time signature. The melody continues with quarter and eighth notes.

6 7 8 9 10

Musical staff 3 for C# Major, measures 6-10. The staff is in treble clef with a key signature of two flats and a common time signature. The melody continues with quarter and eighth notes.

11 12 13

Musical staff 4 for C# Major, measures 11-13. The staff is in treble clef with a key signature of two flats and a common time signature. The melody continues with quarter and eighth notes.

14 15 16

Musical staff 5 for C# Major, measures 14-16. The staff is in treble clef with a key signature of two flats and a common time signature. The melody concludes with quarter and eighth notes.

D \flat Major

1 2 3

Musical staff 1 for D-flat Major, measures 1-3. The staff is in treble clef with a key signature of three flats (B-flat, E-flat, and A-flat) and a common time signature. The melody consists of quarter notes and eighth notes.

"Wie schon leuchtet der Morgenstern" #86 (How brightly shines the morning star)

1 2 3 4 5

Musical staff 2 for D-flat Major, measures 1-5. The staff is in treble clef with a key signature of three flats and a common time signature. The melody includes quarter notes with accents and eighth notes.

6 7 8 9 10

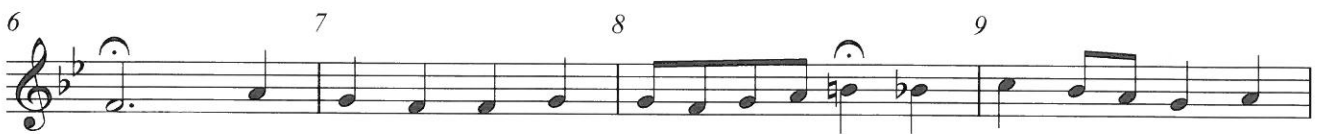
Musical staff 3 for D-flat Major, measures 6-10. The staff is in treble clef with a key signature of three flats and a common time signature. The melody includes quarter notes with accents and eighth notes.

11 12 13 14

Musical staff 4 for D-flat Major, measures 11-14. The staff is in treble clef with a key signature of three flats and a common time signature. The melody includes quarter notes with accents and eighth notes.

2nd Clarinet in B \flat A \flat Major

"Nun ruhen alle Walder," 117 (Now all the forests are at rest)

E \flat Major

"Schmuke dich, o liebe Seele," 22 (Deck thyself, dear Soul)

