

1st Bassoon

B Flat Major

1 Scale



"Es spricht de Unweisen Mund" #27 (The lips of the foolish say)



F Major

1 Scale



"O Ewigkeit, du Donnerwort" #26 (O Eternity, thou word of thunder)



C Major

1



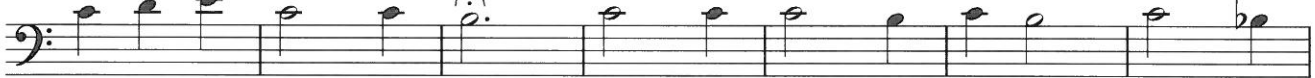
1 "Weg, mein Herz, mit den Gedanken" #298 (Away, my hear, with the thoughts)



8



15



22



G Major

1



"Aus meines Herzens Grunde" #1 (From the depths of my heart)



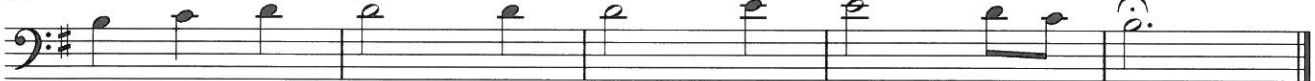
6



12



17

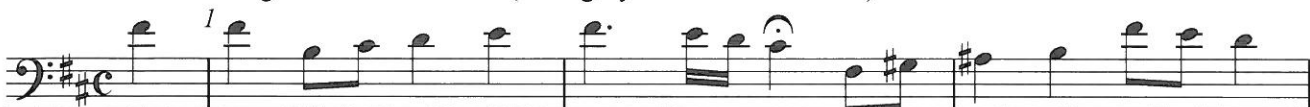


D Major

1



"Ein' fest Burg is unser Gott" #20 (A mighty fortress is our God)



4



7



10



A Major

1



"Ich dank' dir, lieber Herre" #2 (I thank thee, dear Lord)



6



10



E Major

1



"Est is das Heil uns kommen her" #4 (Salvation has come to us)

1



5



B Major

1



"In allen meinen Taten" #140 (In all my deeds)

1



7



F# Major

1



"Was Gott tut, das ist wohlgetan" #65 (What God does is well done)

1



6



Gb Major

1



1

"Freu' dich sehr, o meine Seele" #64 (Rejoice greatly, O my soul)



6




10



C# Major

1



A single musical staff in bass clef with a key signature of three sharps (F#, C#, G#) and a common time signature. The melody begins with a quarter note G#2, followed by eighth notes A2, B2, C#3, D3, E3, F#3, G#3, and ends with a whole note G#2.

1 "Gott der Vater wohn' uns bei" #135 (God the Father, dwell with us)



A single musical staff in bass clef with a key signature of three sharps and a common time signature. The melody starts with a quarter note G#2, followed by eighth notes A2, B2, C#3, D3, E3, F#3, G#3, and ends with a quarter note G#2.

7



A single musical staff in bass clef with a key signature of three sharps and a common time signature. The melody continues with eighth notes G#3, F#3, E3, D3, C#3, B2, A2, and ends with a quarter note G#2.


12



A single musical staff in bass clef with a key signature of three sharps and a common time signature. The melody continues with eighth notes G#2, F#2, E2, D2, C#2, B1, A1, and ends with a quarter note G#2.

Db Major

1



A single musical staff in bass clef with a key signature of four flats (Bb, Eb, Ab, Db) and a common time signature. The melody begins with a quarter note Bb1, followed by eighth notes Cb2, Db2, Eb2, Fb2, Gb2, Ab2, and ends with a whole note Bb1.

"Wie schon leuchtet der Morgenstern" #86 (How brightly shines the morning star)

1



A single musical staff in bass clef with a key signature of four flats and a common time signature. The melody starts with a quarter note Bb1, followed by eighth notes Cb2, Db2, Eb2, Fb2, Gb2, Ab2, and ends with a quarter note Bb1.

6



A single musical staff in bass clef with a key signature of four flats and a common time signature. The melody continues with eighth notes Bb1, Ab2, Gb2, Fb2, Eb2, Db2, Cb2, and ends with a quarter note Bb1.

11



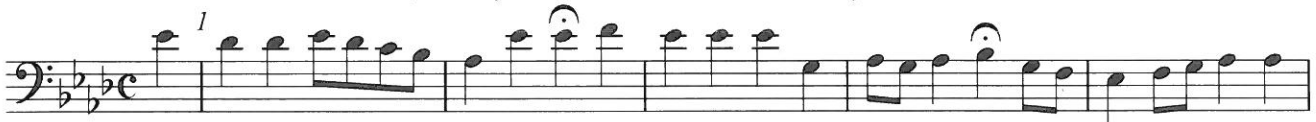
A single musical staff in bass clef with a key signature of four flats and a common time signature. The melody continues with eighth notes Bb1, Ab2, Gb2, Fb2, Eb2, Db2, Cb2, and ends with a quarter note Bb1.

A \flat Major

1



"Nun ruhen alle Walder," 117 (Now all the forests are at rest)



6



10

E \flat Major

1



"Schmuke dich, o liebe Seele," 22 (Deck thyself, dear Soul)



6



11

