

Bass Clarinet in B \flat

B Flat Major

1 Scale 2 3

Musical notation for the B Flat Major scale, measures 1-3. The key signature has two flats (B \flat and E \flat). The scale is written in 4/4 time. Measure 1 contains the first four notes: B \flat 2, C3, D3, E \flat 3. Measure 2 contains the next four notes: F3, G3, A3, B \flat 3. Measure 3 contains the final two notes: C4 and B \flat 3, with a double bar line at the end.

"Es spricht de Unweisen Mund" #27 (The lips of the foolish say)

1 2 3 4 5

Musical notation for the first five measures of the piece. Measure 1: B \flat 2, C3, D3, E \flat 3. Measure 2: F3, G3, A3, B \flat 3. Measure 3: C4, B \flat 3, A3, G3. Measure 4: F3, E \flat 3, D3, C3. Measure 5: B \flat 2, A2, G2, F2, with a repeat sign and a double bar line at the end.

6 7 8 9 10

Musical notation for the last five measures of the piece. Measure 6: E \flat 2, D2, C2, B \flat 1. Measure 7: A2, G2, F2, E \flat 2. Measure 8: D2, C2, B \flat 1, A2. Measure 9: G2, F2, E \flat 2, D2. Measure 10: C2, B \flat 1, A2, G2, with a double bar line at the end.

F Major

1 Scale 2 3

Musical notation for the F Major scale, measures 1-3. The key signature has one flat (B \flat). The scale is written in 4/4 time. Measure 1 contains the first four notes: F2, G2, A2, B \flat 2. Measure 2 contains the next four notes: C3, D3, E3, F3. Measure 3 contains the final two notes: G3 and F3, with a double bar line at the end.

"O Ewigkeit, du Donnerwort" #26 (O Eternity, thou word of thunder)

1 2 3 4 5

Musical notation for the first five measures of the piece. Measure 1: F2, G2, A2, B \flat 2. Measure 2: C3, D3, E3, F3. Measure 3: G3, F3, E3, D3. Measure 4: C3, B \flat 2, A2, G2. Measure 5: F3, E3, D3, C3, with a repeat sign and a double bar line at the end.

6 7 8 9 10

Musical notation for the last five measures of the piece. Measure 6: B \flat 2, A2, G2, F2. Measure 7: E3, D3, C3, B \flat 2. Measure 8: A2, G2, F2, E3. Measure 9: D3, C3, B \flat 2, A2. Measure 10: G2, F2, E3, D3, with a double bar line at the end.

C Major

1 2 3

1 2 3 4 5 6 7

8 9 10 11 12 13 14

15 16 17 18 19 20

21 22 23 24 25 26 27

"Weg, mein Herz, mit den Gedanken" #298 (Away, my hear, with the thoughts)

G Major

1 2 3

1 2 3 4 5

6 7 8 9 10 11

12 13 14 15 16

17 18 19 20 21

"Aus meines Herzens Grunde" #1 (From the depths of my heart)

Bass Clarinet in B \flat

D Major

1 2 3

The first staff of music for the D Major section contains three measures. Measure 1 starts with a treble clef, a key signature of three sharps (F#, C#, G#), and a 4/4 time signature. The melody consists of quarter notes: F#4, A4, B4, C5. Measure 2 continues with quarter notes: D5, C5, B4, A4. Measure 3 ends with a quarter note G#4 and a whole rest.

"Ein' fest Burg is unser Gott" #20 (A mighty fortress is our God)

1 2 3

The second staff of music contains three measures. Measure 4 starts with a treble clef, a key signature of three sharps, and a common time signature. The melody consists of quarter notes: F#4, A4, B4, C5. Measure 5 continues with quarter notes: D5, C5, B4, A4. Measure 6 ends with a quarter note G#4 and a whole rest.

4 5 6

The third staff of music contains three measures. Measure 7 starts with a treble clef, a key signature of three sharps, and a common time signature. The melody consists of quarter notes: F#4, A4, B4, C5. Measure 8 continues with quarter notes: D5, C5, B4, A4. Measure 9 ends with a quarter note G#4 and a whole rest.

7 8 9 10 11 12

The fourth staff of music contains three measures. Measure 10 starts with a treble clef, a key signature of three sharps, and a common time signature. The melody consists of quarter notes: F#4, A4, B4, C5. Measure 11 continues with quarter notes: D5, C5, B4, A4. Measure 12 ends with a quarter note G#4 and a whole rest.

A Major

1 2 3

The first staff of music for the A Major section contains three measures. Measure 1 starts with a treble clef, a key signature of three sharps (F#, C#, G#), and a common time signature. The melody consists of quarter notes: F#4, A4, B4, C5. Measure 2 continues with quarter notes: D5, C5, B4, A4. Measure 3 ends with a quarter note G#4 and a whole rest.

"Ich dank' dir, lieber Herre" #2 (I thank thee, dear Lord)

1 2 3 4 5

The second staff of music contains three measures. Measure 4 starts with a treble clef, a key signature of three sharps, and a common time signature. The melody consists of quarter notes: F#4, A4, B4, C5. Measure 5 continues with quarter notes: D5, C5, B4, A4. Measure 6 ends with a quarter note G#4 and a whole rest.

6 7 8 9

The third staff of music contains three measures. Measure 7 starts with a treble clef, a key signature of three sharps, and a common time signature. The melody consists of quarter notes: F#4, A4, B4, C5. Measure 8 continues with quarter notes: D5, C5, B4, A4. Measure 9 ends with a quarter note G#4 and a whole rest.

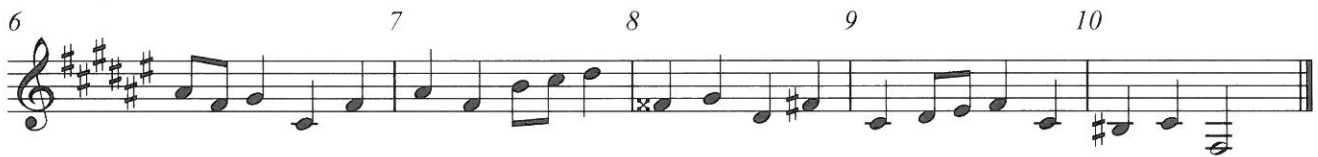
10 11 12 13

The fourth staff of music contains three measures. Measure 10 starts with a treble clef, a key signature of three sharps, and a common time signature. The melody consists of quarter notes: F#4, A4, B4, C5. Measure 11 continues with quarter notes: D5, C5, B4, A4. Measure 12 ends with a quarter note G#4 and a whole rest.

E Major



"Est is das Heil uns kommen her" #4 (Salvation has come to us)



B Major

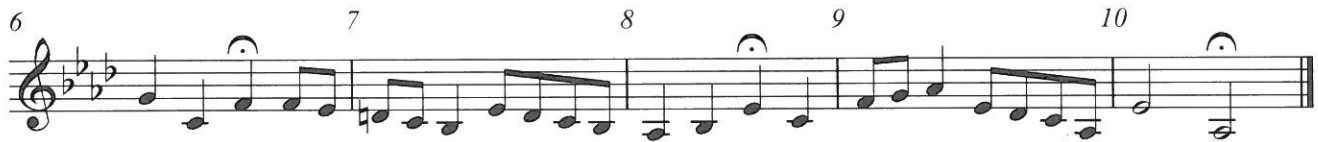
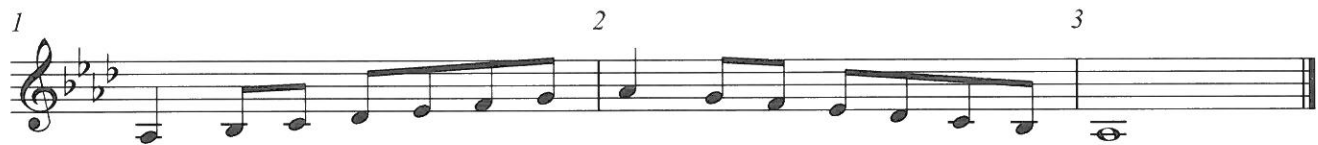


"In allen meinen Taten" #140 (In all my deeds)

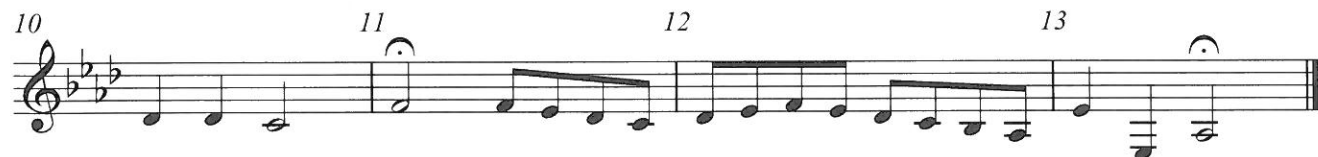
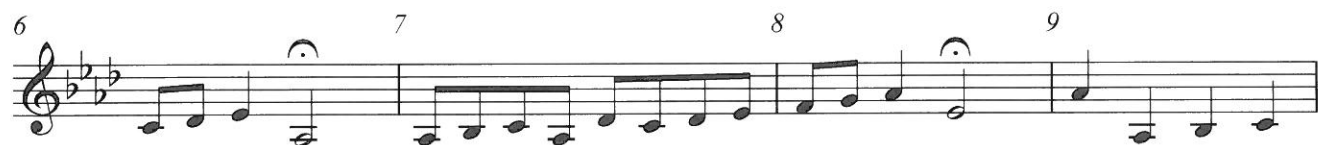


F \sharp Major

"Was Gott tut, das ist wohlgetan" #65 (What God does is well done)

G \flat Major

"Freu' dich sehr, o meine Seele" #64 (Rejoice greatly, O my soul)



C \sharp Major

1 2 3

The first staff of music for C# Major, measures 1-3. It begins with a treble clef, a key signature of two flats (Bb and Eb), and a common time signature (C). The melody consists of quarter notes: G4, A4, B4, C5, D5, E5, F5, G5, F5, E5, D5, C5, B4, A4, G4.

"Gott der Vater wohn' uns bei" #135 (God the Father, dwell with us)

1 2 3 4 5 6

The second staff of music for C# Major, measures 4-6. It continues the melody from the first staff. Measures 4-6 contain quarter notes: G4, A4, B4, C5, D5, E5, F5, G5, F5, E5, D5, C5, B4, A4, G4.

7 8 9 10 11

The third staff of music for C# Major, measures 7-11. It continues the melody. Measure 7: G4, A4, B4, C5. Measure 8: D5, E5, F5, G5. Measure 9: F5, E5, D5, C5. Measure 10: B4, A4, G4. Measure 11: F4, E4, D4, C4.

12 13 14 15 16

The fourth staff of music for C# Major, measures 12-16. It continues the melody. Measure 12: B3, A3, G3. Measure 13: F3, E3, D3, C3. Measure 14: B2, A2, G2. Measure 15: F2, E2, D2, C2. Measure 16: B1, A1, G1.

D \flat Major

1 2 3

The first staff of music for Db Major, measures 1-3. It begins with a treble clef, a key signature of three flats (Bb, Eb, Ab), and a common time signature (C). The melody consists of quarter notes: G4, A4, B4, C5, D5, E5, F5, G5, F5, E5, D5, C5, B4, A4, G4.

"Wie schon leuchtet der Morgenstern" #86 (How brightly shines the morning star)

1 2 3 4 5

The second staff of music for Db Major, measures 4-5. It continues the melody. Measure 4: G4, A4, B4, C5. Measure 5: D5, E5, F5, G5.

6 7 8 9 10

The third staff of music for Db Major, measures 6-10. It continues the melody. Measure 6: F5, G5, A5, B5. Measure 7: C6, B5, A5, G5. Measure 8: F5, E5, D5, C5. Measure 9: B4, A4, G4. Measure 10: F4, E4, D4, C4.

11 12 13 14

The fourth staff of music for Db Major, measures 11-14. It continues the melody. Measure 11: B3, A3, G3. Measure 12: F3, E3, D3, C3. Measure 13: B2, A2, G2. Measure 14: F2, E2, D2, C2.

Bass Clarinet in B \flat A \flat Major

1 2 3

"Nun ruhen alle Walder," 117 (Now all the forests are at rest)

1 2 3 4 5

6 7 8 9

10 11 12

E \flat Major

1 2 3

"Schmuke dich, o liebe Seele," 22 (Deck thyself, dear Soul)

1 2 3 4 5 6

7 8 9 10

11 12 13 14 15