

1st Alto Saxophone

# B Flat Major

1 Scale 2 3

Musical notation for the B Flat Major scale, measures 1-3. The key signature has one flat (Bb) and the time signature is 4/4. Measure 1 starts with a quarter rest, followed by quarter notes Bb, C, D, E, F, G, A, Bb. Measure 2 continues with quarter notes C, D, E, F, G, A, Bb, C. Measure 3 ends with a quarter note Bb and a whole rest.

"Es spricht de Unweisen Mund" #27 (The lips of the foolish say)

Musical notation for the first five measures of the piece. Measure 1: quarter notes Bb, C, D, E, F, G, A, Bb. Measure 2: quarter notes C, D, E, F, G, A, Bb, C. Measure 3: quarter notes C, D, E, F, G, A, Bb, C. Measure 4: quarter notes C, D, E, F, G, A, Bb, C. Measure 5: quarter note Bb, quarter note C, quarter note D, quarter note E, quarter note F, quarter note G, quarter note A, quarter note Bb.

6 7 8 9 10

Musical notation for the last five measures of the piece. Measure 6: quarter notes Bb, C, D, E, F, G, A, Bb. Measure 7: quarter notes C, D, E, F, G, A, Bb, C. Measure 8: quarter notes C, D, E, F, G, A, Bb, C. Measure 9: quarter notes C, D, E, F, G, A, Bb, C. Measure 10: quarter note Bb, quarter note C, quarter note D, quarter note E, quarter note F, quarter note G, quarter note A, quarter note Bb.

# F Major

1 Scale 2 3

Musical notation for the F Major scale, measures 1-3. The key signature has two sharps (F# and C#) and the time signature is 4/4. Measure 1 starts with a quarter rest, followed by quarter notes F#, G, A, B, C, D, E, F#. Measure 2 continues with quarter notes G, A, B, C, D, E, F#, G. Measure 3 ends with a quarter note F# and a whole rest.

"O Ewigkeit, du Donnerwort" #26 (O Eternity, thou word of thunder)

Musical notation for the first five measures of the piece. Measure 1: quarter notes F#, G, A, B, C, D, E, F#. Measure 2: quarter notes G, A, B, C, D, E, F#, G. Measure 3: quarter notes G, A, B, C, D, E, F#, G. Measure 4: quarter notes G, A, B, C, D, E, F#, G. Measure 5: quarter notes G, A, B, C, D, E, F#, G.

6 7 8 9 10

Musical notation for the last five measures of the piece. Measure 6: quarter notes F#, G, A, B, C, D, E, F#. Measure 7: quarter notes G, A, B, C, D, E, F#, G. Measure 8: quarter notes G, A, B, C, D, E, F#, G. Measure 9: quarter notes G, A, B, C, D, E, F#, G. Measure 10: quarter note F#, quarter note G, quarter note A, quarter note B, quarter note C, quarter note D, quarter note E, quarter note F#.

## C Major

1 2 3

"Weg, mein Herz, mit den Gedaken" #298 (Away, my hear, with the thoughts)

1 2 3 4 5 6 7

8 9 10 11 12 13 14

15 16 17 18 19 20

21 22 23 24 25 26 27

## G Major

1 2 3

"Aus meines Herzens Grunde" #1 (From the depths of my heart)

1 2 3 4 5

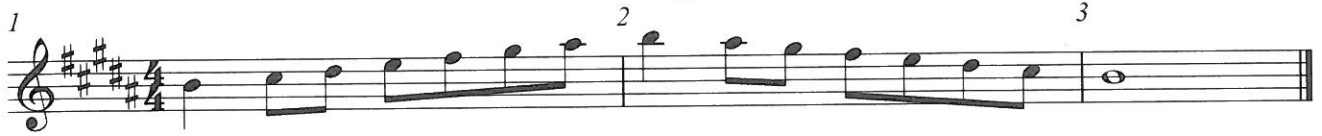
6 7 8 9 10 11

12 13 14 15 16

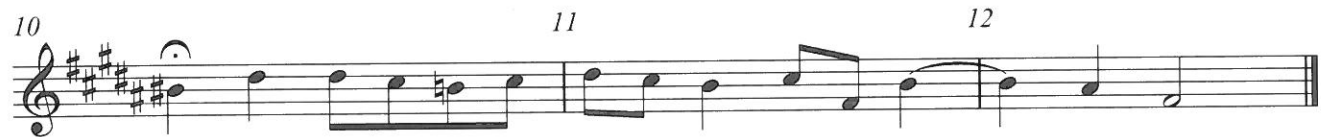
17 18 19 20 21

## 1st Alto Saxophone

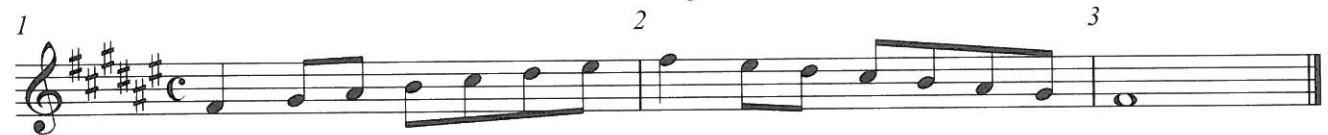
## D Major



"Ein' fest Burg is unser Gott" #20 (A mighty fortress is our God)



## A Major



"Ich dank' dir, lieber Herre" #2 (I thank thee, dear Lord)



### E Major

1 2 3

A musical staff in E major (three flats) and common time. Measure 1 starts with a quarter rest followed by quarter notes G4, A4, B4, C5. Measure 2 contains quarter notes D5, C5, B4, A4. Measure 3 contains quarter notes G4, F4, E4, and a whole note D4.

"Est is das Heil uns kommen her" #4 (Salvation has come to us)

1 2 3 4 5

A musical staff in E major (three flats) and common time. Measure 4 contains quarter notes G4, A4, B4, C5. Measure 5 contains quarter notes D5, C5, B4, A4. Measure 6 contains quarter notes G4, F4, E4, and a whole note D4. Measure 7 contains quarter notes C5, B4, A4, G4. Measure 8 contains quarter notes F4, E4, D4, and a whole note C4. Measure 9 contains quarter notes B3, A3, G3, and a whole note F3. Measure 10 contains quarter notes E3, D3, C3, and a whole note B2. Measure 11 contains quarter notes A2, G2, F2, and a whole note E2. Measure 12 contains quarter notes D2, C2, B1, and a whole note A1.

6 7 8 9 10

A musical staff in E major (three flats) and common time. Measure 6 contains quarter notes G4, A4, B4, C5. Measure 7 contains quarter notes D5, C5, B4, A4. Measure 8 contains quarter notes G4, F4, E4, and a whole note D4. Measure 9 contains quarter notes C5, B4, A4, G4. Measure 10 contains quarter notes F4, E4, D4, and a whole note C4.

### B Major

1 2 3

A musical staff in B major (two sharps) and common time. Measure 1 starts with a quarter rest followed by quarter notes G4, A4, B4, C5. Measure 2 contains quarter notes D5, C5, B4, A4. Measure 3 contains quarter notes G4, F4, E4, and a whole note D4.

"In allen meinen Taten" #140 (In all my deeds)

1 2 3 4 5 6

A musical staff in B major (two sharps) and common time. Measure 4 contains quarter notes G4, A4, B4, C5. Measure 5 contains quarter notes D5, C5, B4, A4. Measure 6 contains quarter notes G4, F4, E4, and a whole note D4. Measure 7 contains quarter notes C5, B4, A4, G4. Measure 8 contains quarter notes F4, E4, D4, and a whole note C4. Measure 9 contains quarter notes B3, A3, G3, and a whole note F3. Measure 10 contains quarter notes E3, D3, C3, and a whole note B2. Measure 11 contains quarter notes A2, G2, F2, and a whole note E2. Measure 12 contains quarter notes D2, C2, B1, and a whole note A1.

7 8 9 10 11 12

A musical staff in B major (two sharps) and common time. Measure 7 contains quarter notes G4, A4, B4, C5. Measure 8 contains quarter notes D5, C5, B4, A4. Measure 9 contains quarter notes G4, F4, E4, and a whole note D4. Measure 10 contains quarter notes C5, B4, A4, G4. Measure 11 contains quarter notes F4, E4, D4, and a whole note C4. Measure 12 contains quarter notes B3, A3, G3, and a whole note F3.

## 1st Alto Saxophone

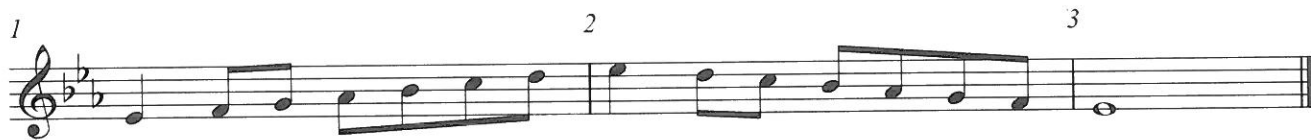
## F# Major



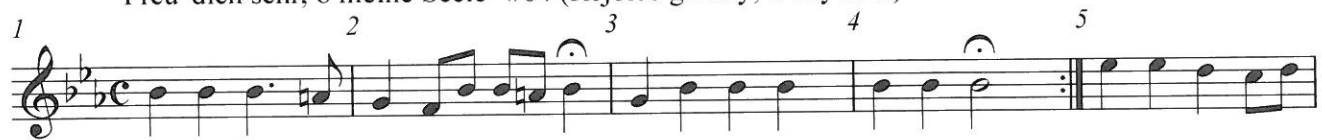
"Was Gott tut, das ist wohlgetan" #65 (What God does is well done)



## Gb Major



"Freu' dich sehr, o meine Seele" #64 (Rejoice greatly, O my soul)



### C# Major

1 2 3

A musical staff in C# major, 3/4 time, containing measures 1, 2, and 3. Measure 1 starts with a treble clef and a key signature of two flats (Bb, Eb). The melody consists of quarter notes: B4, C5, D5, E5. Measure 2 continues with quarter notes: F5, G5, A5, B5. Measure 3 ends with a whole note: C6.

"Gott der Vater wohn' uns bei" #135 (God the Father, dwell with us)

1 2 3 4 5 6

A musical staff in C# major, 3/4 time, containing measures 4, 5, and 6. Measure 4 starts with a treble clef and a key signature of two flats (Bb, Eb). The melody consists of quarter notes: B4, C5, D5, E5. Measure 5 continues with quarter notes: F5, G5, A5, B5. Measure 6 ends with a whole note: C6.

7 8 9 10 11

A musical staff in C# major, 3/4 time, containing measures 7 through 11. Measure 7 starts with a treble clef and a key signature of two flats (Bb, Eb). The melody consists of quarter notes: B4, C5, D5, E5. Measure 8 continues with quarter notes: F5, G5, A5, B5. Measure 9 ends with a whole note: C6. Measure 10 continues with quarter notes: B4, C5, D5, E5. Measure 11 ends with a whole note: C6.

12 13 14 15 16

A musical staff in C# major, 3/4 time, containing measures 12 through 16. Measure 12 starts with a treble clef and a key signature of two flats (Bb, Eb). The melody consists of quarter notes: B4, C5, D5, E5. Measure 13 continues with quarter notes: F5, G5, A5, B5. Measure 14 ends with a whole note: C6. Measure 15 continues with quarter notes: B4, C5, D5, E5. Measure 16 ends with a whole note: C6.

### Db Major

1 2 3

A musical staff in Db major, 3/4 time, containing measures 1, 2, and 3. Measure 1 starts with a treble clef and a key signature of three flats (Bb, Eb, Ab). The melody consists of quarter notes: Bb4, C5, D5, Eb5. Measure 2 continues with quarter notes: F5, G5, Ab5, Bb5. Measure 3 ends with a whole note: C6.

"Wie schon leuchtet der Morgenstern" #86 (How brightly shines the morning star)

1 2 3 4 5

A musical staff in Db major, 3/4 time, containing measures 4 and 5. Measure 4 starts with a treble clef and a key signature of three flats (Bb, Eb, Ab). The melody consists of quarter notes: Bb4, C5, D5, Eb5. Measure 5 continues with quarter notes: F5, G5, Ab5, Bb5.

6 7 8 9 10

A musical staff in Db major, 3/4 time, containing measures 6 through 10. Measure 6 starts with a treble clef and a key signature of three flats (Bb, Eb, Ab). The melody consists of quarter notes: Bb4, C5, D5, Eb5. Measure 7 continues with quarter notes: F5, G5, Ab5, Bb5. Measure 8 ends with a whole note: C6. Measure 9 continues with quarter notes: Bb4, C5, D5, Eb5. Measure 10 ends with a whole note: C6.

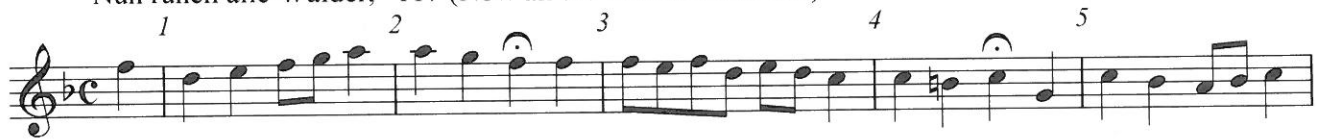
11 12 13 14

A musical staff in Db major, 3/4 time, containing measures 11 through 14. Measure 11 starts with a treble clef and a key signature of three flats (Bb, Eb, Ab). The melody consists of quarter notes: Bb4, C5, D5, Eb5. Measure 12 continues with quarter notes: F5, G5, Ab5, Bb5. Measure 13 ends with a whole note: C6. Measure 14 continues with quarter notes: Bb4, C5, D5, Eb5.

## 1st Alto Saxophone

A $\flat$  Major

"Nun ruhen alle Walder," 117 (Now all the forests are at rest)

E $\flat$  Major

"Schmuke dich, o liebe Seele," 22 (Deck thyself, dear Soul)

